

D-4E

Gear Pump Hot -Melt Units

Sophisticated Technology. Durable Performance

The **MELTON** D-4E unit is ideally suited for a range of packaging, paper converting, graphic arts, non-wovens and product assembly applications. Applications include spray, ribbon coating, direct contact, and high-speed jetting adhesive dispensing guns.

- The D-4E uses large, reliable 185 watts motor.
- Large capacity gear pump delivers 27 kg/hour.
- Teflon[®]-coated tanks reduce char buildup for easy maintenance and reliable operation.
- Independent, redundant over-temperature circuits and system over-pressure protection provide safe operation.
- 100% Compatibility with industry standard hoses, guns.
- Independent control of each heated zone (up to 5) minimizes adhesive degradation and permits precise, uniform patterns.
- Compliance with major approval codes worldwide.

System features and Benefits



Solid - state controls, precise RTD temperature sensors and thermostatic temperature control optimize system performance.



Outlets for two hoses and guns allows for user flexibility.



Positive displacement, motor-driven gear pump offers a continuous pulse free output. D4E units feature one mechanical relief valve or optional pneumatic relief valve.



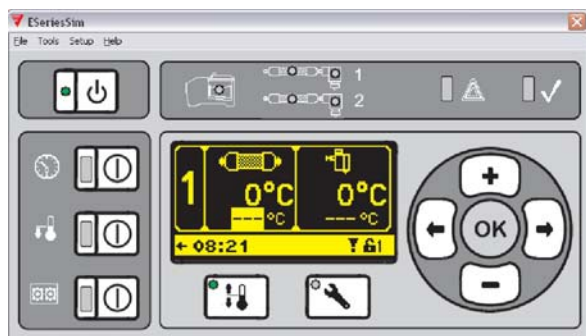
Teflon[®]-coated tanks



D-Series system touch-pad PID controller features:

- graphical display
- programmable sequential zone start-up
- automatic temperature setback
- high/low temperature protection
- high-pressure protection
- Fahrenheit or Celsius option
- system diagnostics
- seven-day programmable clock
- two user selectable inputs and one selectable output
- password protection for setup configuration

D-4E Gear Pump Hot -Melt Units



D4E units feature an easy-to-use touch pad with a bright LCD screen which allows operators to quickly setup system parameters and monitor system operation.



A TOTAL PACKAGE

Melton offers a complete selection of hot-system components and support equipment:

- RTD hot-melt hoses**
- Manual and automatic dispensing valves**
- Nozzle and applicator styles**
- Mounting bracket packages**
- Solid - state pattern control systems**
- In-line filters**
- Replacement parts for competitive systems**

Technical Specifications

D- 4E Characteristics	
Tank Capacity	4,4 kg
Melt rate	5-5.5 kg
Motor	185 watts Fixed Speed AC
Pump rate	27 kg/hr
Temp.Range	105° - 205°C (220° - 400° F)
Temp. Stability	0.5°C (1°F)
Electrical	110-120 VAC or 200/240 VAC AMP single phase with ground
Weight	34 kg
Dimensions	312 mm x 424 mm x 607 mm
Gun attachments	2



MELTON S.L.U. • Pol. Ind. Agustinos, calle G, Nº 34 • 31160 Orcoyen • NAVARRA • ESPAÑA
 Tel.: +34 948 321 580 • Fax: +34 948 326 584 • e-mail: melton@melton.es • www.meltonhotmelt.com

